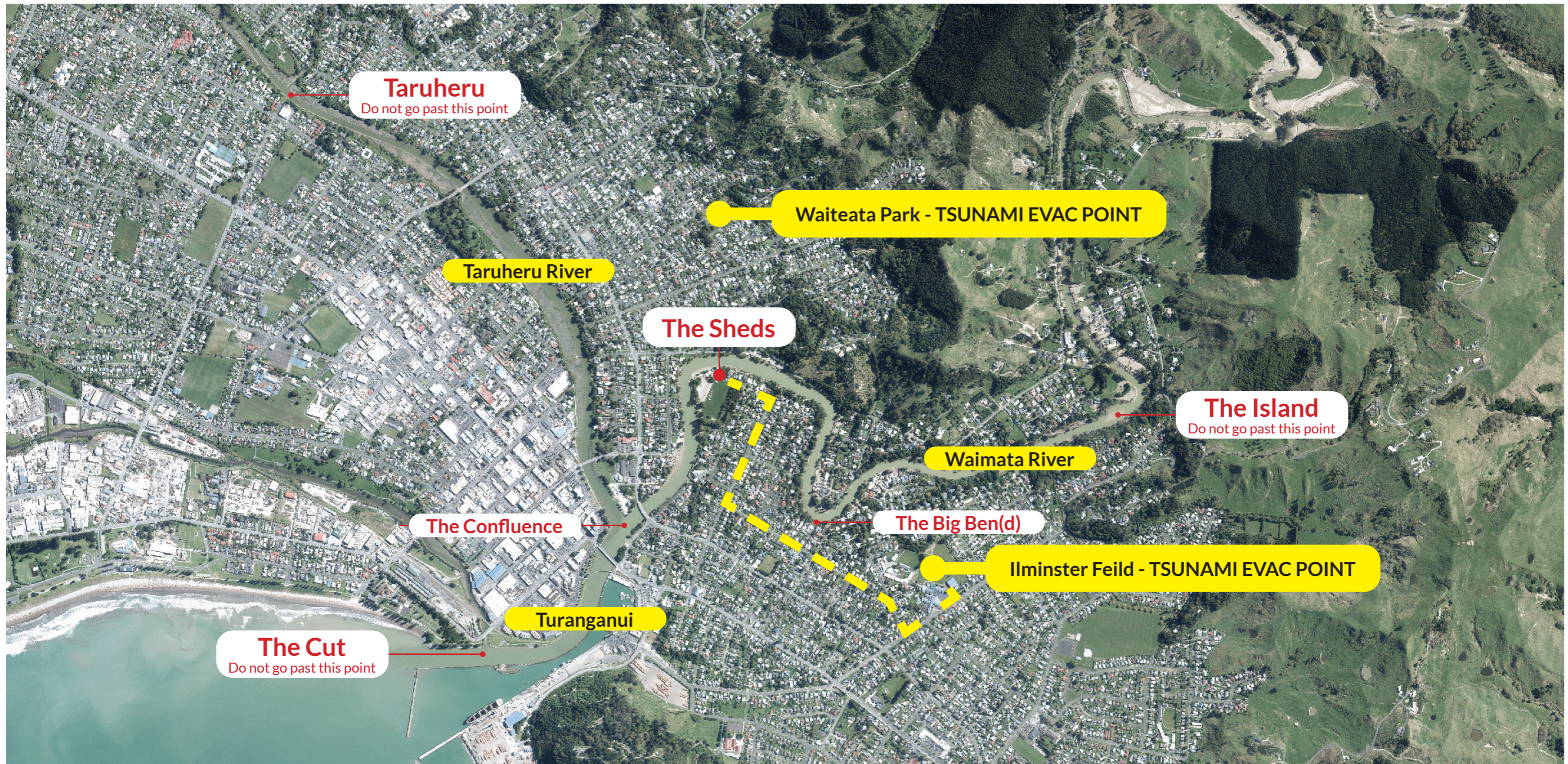


GISBORNE ROWING CLUB - WATERWAYS MAP



OUR THREE RIVERS - RESPECT THEM



The Turanganui

The Taruheru and Waimata Rivers join to form the 1200 metre Turanganui River, the shortest river in the country. It flows through reach the Pacific Ocean at the northern end of Turanganui-a-Kiwa / Poverty Bay.



The Taruheru

The Taruheru is one of Gisborne city's 'Three Rivers' and in the lower reaches it provides for many recreational activities. The catchment is mainly within the lower Poverty Bay Flats with headwaters only 13 km from the city.



The Waimata

One of Gisborne city's three rivers that flow through the inner-city area. The catchment size is 226 km² and land use is mainly typical Gisborne hill country sheep and cattle farming with large areas of exotic forest on the steeper inland areas.